

Torrance County Cooperative Extension Service

Leather Craft Class

When:

Wednesday, February 14, 2024

ATTENTION ALL Torrance County 4-H Youth!

We will be continuing our Leather Craft Classes starting in February. Learn about the 4-H Leather Craft projects and continue with the different Units for returning members!

Registration:

Class size is limited so register today (call or email to reserve your spot).

Class times:

2:30-3:30 pm

4:00-5:00 pm

Contact:

Debby Maberry

Extension Family and Consumer Science Agent/4-H

505-544-4334

maberryd@nmsu.edu

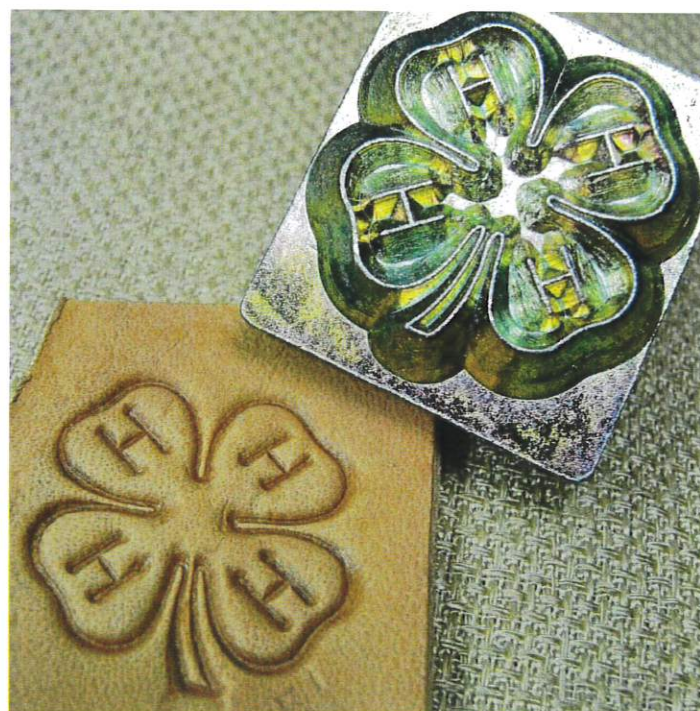
Meeting will be held at:

East Torrance County Soil & Water Building

700 10th Street

PO Box 168

Estancia, NM 87016



BE BOLD. Shape the Future.
**College of Agricultural, Consumer
and Environmental Sciences**

If you are an individual with a disability who is in need of an auxiliary aid or service to participate, please contact Debby Maberry in advance at (505) 544-4334 or maberryd@nmsu.edu.

New Mexico State University is an equal opportunity/affirmative action employer and educator.
NMSU and the U.S. Department of Agriculture cooperating.

Torrance County Cooperative Extension Service

CORN HUSK WORKSHOP

When:

Wednesday, February 14, 2024

**ATTENTION ALL Torrance County
4-H Youth!**

Join us for the Uniquely New Mexico
Project Classes starting in February with
Corn Husk Doll making!

Registration:

Class size is limited so register today (call
or email to reserve your spot).

Class times:

2:30-3:30 pm

4:00-5:00 pm



Contact:

Debby Maberry

Extension Family and Consumer Science

Agent/4-H

505-544-4334

maberryd@nmsu.edu



BE BOLD. Shape the Future.
**College of Agricultural, Consumer
and Environmental Sciences**

If you are an individual with a disability who is in need of an auxiliary aid or service to participate,
please contact Debby Maberry in advance at (505) 544-4334 or maberryd@nmsu.edu.

New Mexico State University is an equal opportunity/affirmative action employer and educator.
NMSU and the U.S. Department of Agriculture cooperating.

FREE CLASS!

Series: Eat Smart Live Strong
Learn Cooking Skills

Save Money When Buying Food

Explore Food Health and Safety



OUR NEXT GROUP RUNS: March 4,11,18,25

WE MEET: Mondays @ 11 am

JOIN US AT: Bethel Community Storehouse
1719 4th St S, Moriarty, NM 87035

Contact your local ICAN Educator 505-544-4333 at
Mon-Thurs or show up to sign up,

or sign up online at redcap.link/snap



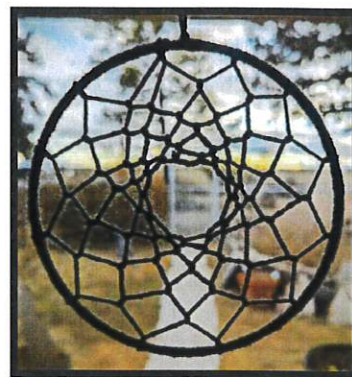
If you are an individual with a disability and need an auxiliary aid or service, call 505-544-4333 at _____ or email _____ no later than 7 days before your class.

This work is funded by USDA's Supplemental Nutrition Assistance Program (SNAP). This institution is an equal opportunity provider. This work is delivered through New Mexico State University's Cooperative Extension Service and College of Agricultural, Consumer, and Environmental Sciences (ACES). ACES is an engine for economic and community development in New Mexico, improving the lives of New Mexicans through academics, research, and extension programs. USDA and NMSU are equal opportunity employers and educators.

Torrance County Cooperative Extension Service

SPRING WORKSHOPS

Join us for a free four-part series of classes at Bethel Storehouse in Moriarty following the free ICAN nutrition education class. Attend as many as you like to enjoy food sampling with ICAN and fun workshops starting on Monday March 4th. Come join us for either class or both!



- ❖ **March 4th Candle Making**
- ❖ **March 11th Leather Craft**
- ❖ **March 18th Macrame Plant Hanger**
- ❖ **March 25th Dream Catchers**



ICAN COOKING DEMO

11am to 12 pm

WORKSHOPS

12pm to 2pm.

Where:

Bethel Storehouse
1719 4th Street
Moriarty, NM 87035

Contact:

Debby Maberry
Family and Consumer Science Agent/4-H
505-544-4334
maberryd@nmsu.edu



BE BOLD. Shape the Future.
College of Agricultural, Consumer
and Environmental Sciences

If you are an individual with a disability who is in need of an auxiliary aid or service to participate, please contact Debby Maberry in advance at (505) 544-4334 or maberryd@nmsu.edu.

New Mexico State University is an equal opportunity/affirmative action employer and educator.
NMSU and the U.S. Department of Agriculture cooperating.

Kitchen Creations

FREE Diabetes Cooking Classes!



Please join us for this **FREE** series of 4 classes!

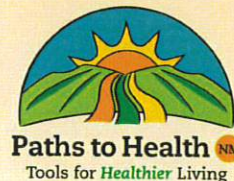
- Learn how to plan meals that help manage diabetes.
- Practice cooking foods in healthier ways.
- Enjoy the support of others who are living with diabetes.

Provided by:

Diabetes MAPP
Diabetes Management and Prevention Programs



BE BOLD. Shape the Future.
College of Agricultural, Consumer and Environmental Sciences



For more information about
Paths to Health NM programs, call:
505.850.0176 or 575.703.2343

ADD LOGO(S) IN THIS BOX

Class Details

- DAY OF WEEK:** Thursdays
- DATES:** April 4,11,18,25
- TIME:** 9 am till noon
- LOCATION:** Torrance County CES Office
205 9th Street
Estancia, NM, 87
- INSTRUCTORS:** Debby Maberry, County Program Director
Elizabeth Galbraith, RDN, LD
Cindy Davies, MA
- TO REGISTER:** Call 505-544-4334 or email
maberryd@nmsu.edu

Please sign up at: kitchencreations.nmsu.edu

New Mexico State University, in cooperation with the U.S. Department of Agriculture, is an equal opportunity/affirmative action employer and educator. If you are an individual with a disability and need an auxiliary aid or service, please contact the Extension Office at 505-544-4334

Scan this QR code to visit our website

